

## INDEX

02	<b>1. Installation of the App</b>
02	<b>2. Loginto your Techno Innovations account</b>
03	<b>3. Menu and navigation</b>
05	<b>4. Quotes page</b>
05	a. Adding financial instruments to the quotes list
06	B. Managing options on the page Quotes
08	<b>5. Chart page</b>
08	a. Operational chart buttons
10	b. Indicators
12	<b>6. Trading page</b>
13	a. How to place a trade
16	b. How to close / modify an order
17	<b>7. History page</b>
18	<b>8. Managing options menu</b>
18	a. Accounts
20	b. Settings
20	c. Messages



### ADDRESS

Techno Innovations LTD  
7 Strazhitsa str, Sofia- 1220, Bulgaria.

### WEB

support@technoinnovationsltd.com  
www.technoinnovationsltd.com

## 1. INSTALLATION OF THE APP

Once you have downloaded and installed MetaTrader 4 for Android™ from Google Play, the Metatrader 4 icon will appear on your screen.



## 2. LOGIN TO YOUR Techno Innovations ACCOUNT

To open the application, simply click on the icon



You will be presented with two options - you can either log in to an existing account or open a free demonstrational account.



Please always choose the first option “Login with existing account”!

### NOTE

You cannot open a demo account by Techno Innovations via the mobile application. If you sign up for a demo account directly from the mobile platform, you will not receive Techno Innovations pricing, leverage, or available instruments. It will not be a Techno Innovations demo account, but rather a generic overview of MetaTrader 4 for the smart phone.

**PLEASE DO NOT USE THE OPTION “OPEN A DEMO ACCOUNT”.**

You can open a demo account only via the desktop platform of Techno

Brokers or you can receive login details from our customer support under support@technoinnovationsltd.com

Once you have selected “Login with an existing account,” you have to select the server that you wish to connect to. Type in the **Search** field “3” and you will be presented with our two servers to connect to.

To connect to your Demo account, select the “Techno-Demo” server.

To connect to your Live account, select the “Techno-Live” server.

On the next step you will be directed to the **Login** page. (as shown on the right)

Please fill in your Technoaccount number and password.

If you tick the bar **Save password**, you will save your login credentials, so that you do not have to enter them each time you open the application.

However, if the box is left un-ticked, then you will have to enter your login and password every time you want to login to your account.

When you have entered your login details, click on the **Sign in** button.



### 3. MENU AND NAVIGATION

At any point of using this application, you can press the menu button of your phone and the six managing options will be presented to you:



**New Order** – This is the section where you can place new orders.

**Symbols** – From here, you can add a new trading instrument to your quotes list and change the instruments' order.

**Accounts** – Allows you to add more accounts and to see all of them at a glance.

**Settings** – Here you can customize some functions of your MetaTrader 4 for Android, e.g. display settings.

**About** – Provides you with information about this MetaTrader 4 Android version.

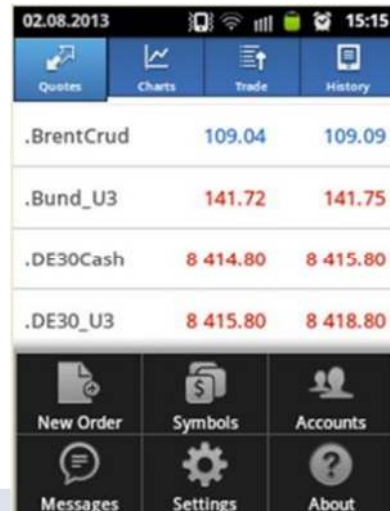
**Messages** – Here you can get messages from the MQL5.community and Expert Advisors by using your ID.

#### 4. QUOTESPAGE

Upon successful login, you will enter the **Quotes** page. On the top of the screen are located the 4 main Control Tabs that you will use to manage your account.

Those 4 Tabs are:

1. **Quotes** – shows the financial instruments and their current spreads listed
2. **Charts** - describes price movements of the preferred currency pair
3. **Trade** - here you will find the main information regarding your open positions (balance, free margin, etc.)
4. **History** – contains details about your trading history and balance



When starting the Apps in the **Quotes** page you will see just a few of 30 preferred instruments that are set as default to arise on your display.

##### A. ADDING FINANCIAL INSTRUMENTS TO THE QUOTES LIST

To add more financial instruments to your Quotes list, select the **Symbols** button from the managing options menu.

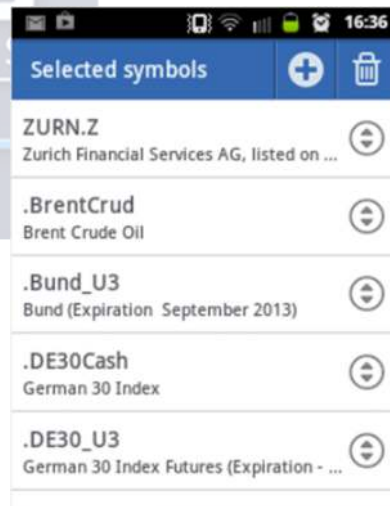
In the next window you will see a list of all financial instruments that are currently displaying on your **Quotes** chart.

By dragging the **double arrow icon** of certain instrument, you can rearrange the order of the presently listed symbols.

Use the **plus button** to add more instruments.

Use the **recycle bin** to remove unwanted instruments.

After clicking the **plus button**



Please find below the content of each group.

**FX** - currencies

**Equities.UK** - LSE Equity CFDs

**Bonds.Futures** - Bonds

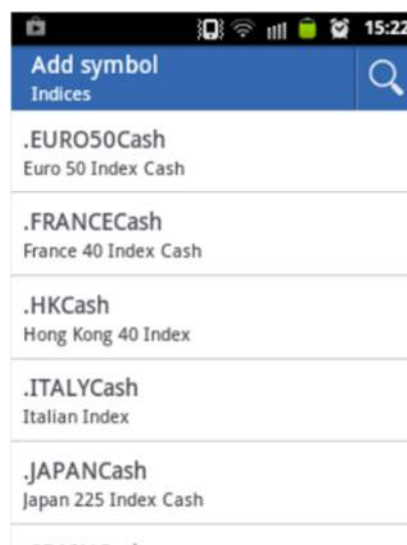
**Equities.EU** - European Equity CFDs

**Equities.US** - GL American Equity CFDs

**Commodities** - WTI, Brent Crude Oil and other commodities

**Equities.CH** - Swiss Equity CFDs

**Indices** - Indices



When you tap on a certain instrument group (e.g. **Indices**) you will see all the instruments from that group which are offered by Techno Innovations.

You should simply tap on a certain instrument and it will be added automatically to your **Quotes** list.

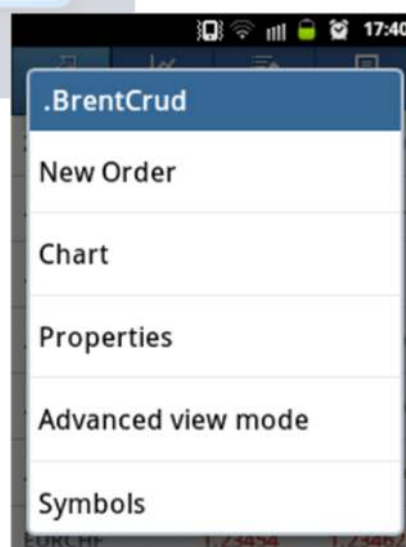
#### NOTE

We do not recommend opening more than 50 financial instruments in the **Quotes** list as this may slow down the operation of the platform.

## B. MANAGING OPTIONS ON THE QUOTES PAGE

By double clicking/ tapping on a certain financial instrument from the **Quotes** list, a pop up box with 5 options will be presented to you:

- New Order
- Chart
- Properties
- Advanced/ Simple view mode
- Symbols



#### ADDRESS

Techno Innovations LTD  
7 Strazhitsa str, Sofia- 1220, Bulgaria.

#### WEB

support@technoinnovationsltd.com  
www.technoinnovationsltd.com

Using the **New Order** option, you can place a trade for the specific instrument you have selected.

Selecting the **Chart** menu will allow you to see the chart of the specified instrument.

The **Properties** option provides you with detailed information for the preferred instrument, including spread, digits, stop levels, pending orders /they are valid Good Till Canceled/, contract size, tick size, tick value, profit calculation mode, margin calculation, initial margin, margin hedge.

EURGBP Euro vs Great Britan Pound	
Spread:	floating
Digits:	5
Stop levels:	0
Pending orders GTC:	Yes
Contract size:	100000
Profit calculation mode:	Forex
Swap type:	In points
Swap long:	-3.2

The quotes can be displayed in an **Advanced view mode** or in the default **Simple view mode**.

By selecting the **Advanced Mode** option you can see the spreads /shown in pipettes/, the time when the prices were last updated, and High and Low price levels.

.Bund_H3	141.59	141.62
13:54:09		
Spread: 3	High: 141.95	Low: 141.43
.DE30Cash	7820.80	7821.80
13:53:58		
Spread: 100	High: 7 863.30	Low: 7 811.30

In contrast to the **Advanced Mode**, the **Simple Mode** displays only the ask and bid price, without high and low price levels, spreads and time of updating.

.DE30Cash	7 835.00	7 836.00
.DUTCHCash	357.50	357.70

You could also customize the quotes page using the **Settings** section of the **managing options** menu and then you can directly choose the preferred mode.

Settings	
Quotes	
<b>Advanced mode</b>	
In the advanced mode, the quotes window contains spreads, time data, as well as High and Low prices.	<input checked="" type="checkbox"/>
Charts	
<b>Line type</b>	<input type="radio"/>
Candlestick	<input checked="" type="radio"/>
<b>OHLC</b>	<input checked="" type="checkbox"/>
Displays open, high, low and close prices on chart for the last candle or for candle pointed with crosshair.	
Data window	

For the **Symbol** section, please have a look at **chapter 4a**.

PAGE 7

#### ADDRESS

Techno Innovations LTD  
7 Strazhitsa str, Sofia- 1220, Bulgaria.

#### WEB

support@technoinnovationsltd.com  
www.technoinnovationsltd.com

## 5. CHART PAGE


You can access the **Chart** page by clicking on the **Chart** tab at the top of the screen.

The **Chart** page of the mobile platform will always show the current instrument you have selected.

You can zoom in or zoom out the chart by holding both your fore finger and your thumb on the screen and pinching to zoom in and out.



### A. OPERATIONAL CHART BUTTONS AND SETTINGS

To use the crosshair click the  button.

To change the instrument that is displayed, select the  tab at the bottom of the screen.

The  tab allows you to switch timeframes for your chart.

You have 9 different time intervals (Periodicity) to choose from:

**M1** – one minute chart

**M5** – five minutes chart

**M15** – fifteen minutes chart

**M30** – thirty minutes chart

**H1** – one hour chart


**H4** – four hours chart

**D1** – daily chart

**W1** – one week chart

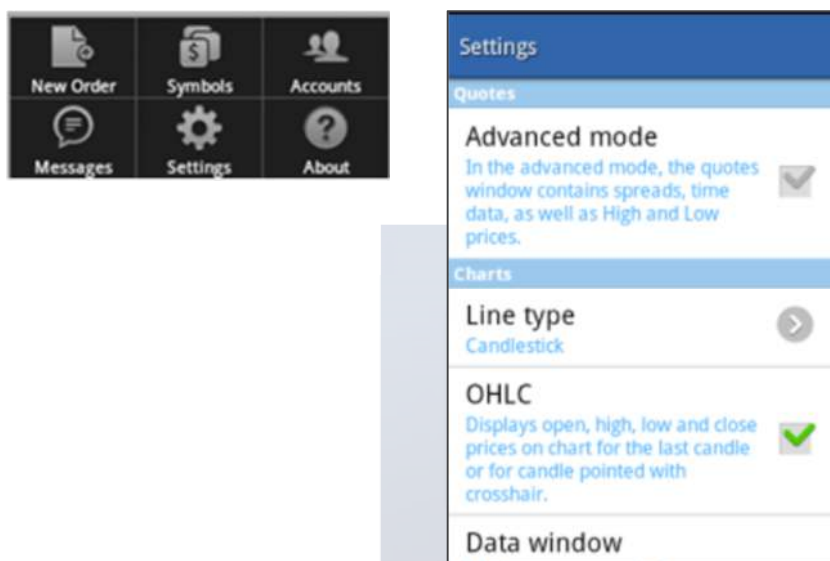
**MN1** – one month chart



The  tab can be used to place an order. From here, you can enter the traded volume size; select another instrument and the type of order execution you want to place – either choosing between a market execution or pending order (Buy Limit, Sell Limit, Buy Stop, Sell Stop).

For more information about placing an order, please have a look at **chapter 6**.

This application allows you to customize the chart according to your needs or trading strategies as well. Just click the **Settings** button of the managing options menu and you will find within the **Settings** a special **Charts** section.



Here you can turn **On and Off the Volumes**, the **Trade levels**, the **Open/High/Low/Close rates** and the **Data window**.

Furthermore, you can choose between **bar chart**, **candlestick** and **line chart** your preferable line style.

When **Trade Levels** is enabled, all open positions and pending orders of a symbol are shown on the symbol chart. The trade operations are displayed as lines with signatures at the level, at which they were executed.

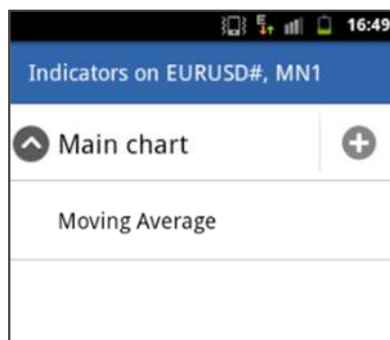
The function **OHLC** displays open, high, low and close price for the relevant chart period.

#### NOTE

Note: The MT4 app can only open one chart at a time. To change the chart of the CFD or currency pair, simply go back to **Quotes**, choose the instrument you want to display, tap on it, and in the action menu tap on **Chart**. Your customized chart characteristics **will not be lost** in this process.

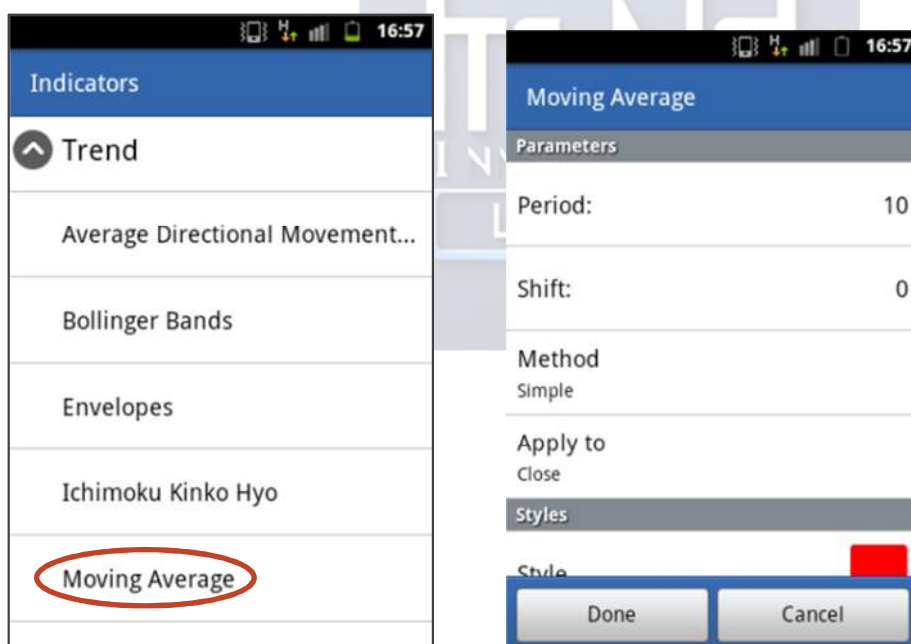
## B. INDICATORS

By selecting the **Indicators button** , the page **Indicators** will appear. To add an indicator, click the plus button.



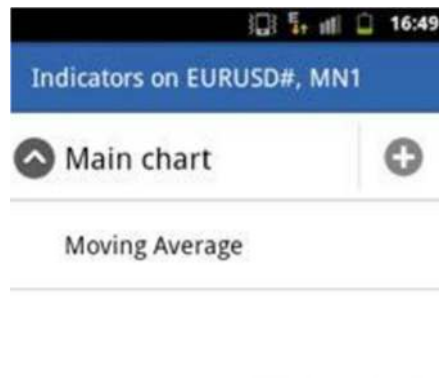
You will find four major indicator groups: **Trend, Oscillators, Volumes, Bill Williams.**


A list of all available indicators will appear. Tap on the desired indicator, for instance **Moving Average**, to open its properties window like shown below. The properties of an Indicator may be altered to your own preference.

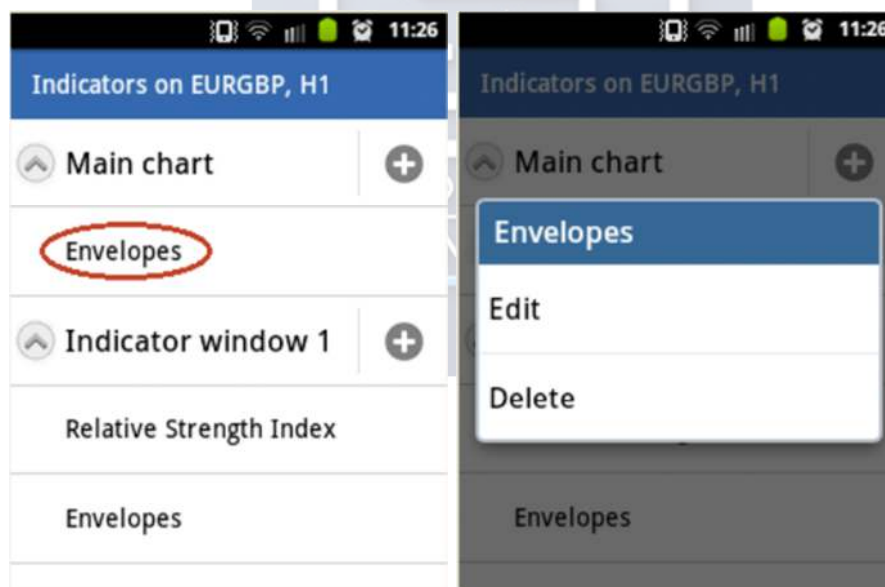


To confirm your properties and go back to the chart, select **Done**.

To add another Indicator to your chart, you should open the **Indicator** window again and add another indicator by clicking on the **plus** button.

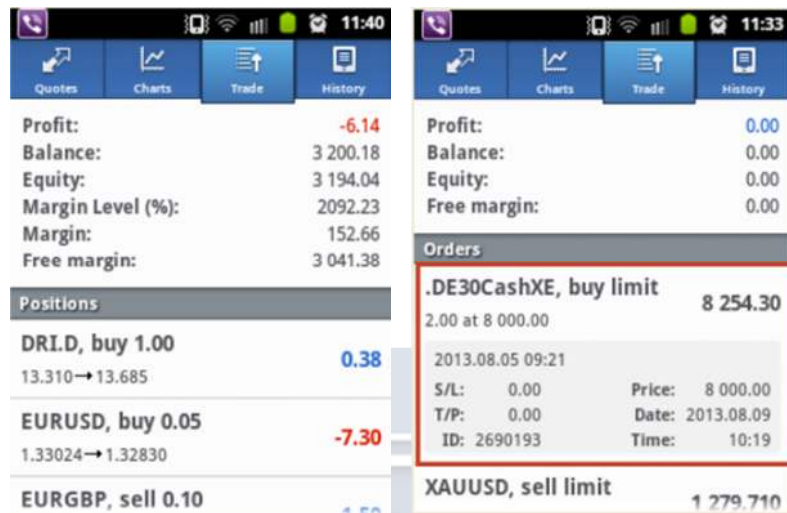


If you want to edit or remove an Indicator from the chart, you need to go back to the **Indicator** menu by pressing the  button. You should only tap on the certain Indicator, wait two second and a new pop-up menu will appear. On this display you will be presented with two options: **Edit or Delete**.



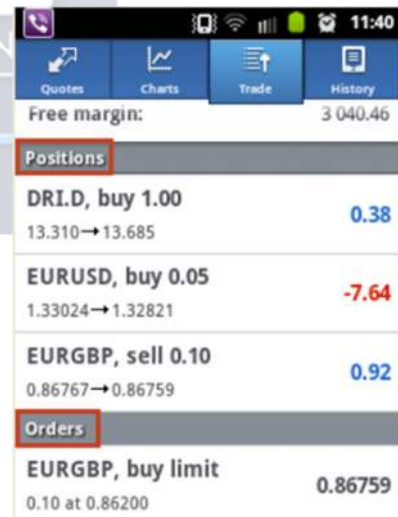
## 6. TRADE PAGE

The **Trade** Tab can be referred to as Terminal, similar as to the MT4 PC. Here you can see your account balance, equity, margin, free margin, margin level, as well as all open Positions and Pending orders. When tapping with your finger on a position from the **Positions** list you can see its parameters (Stop loss, Take profit, Swap costs, Taxes, etc.).



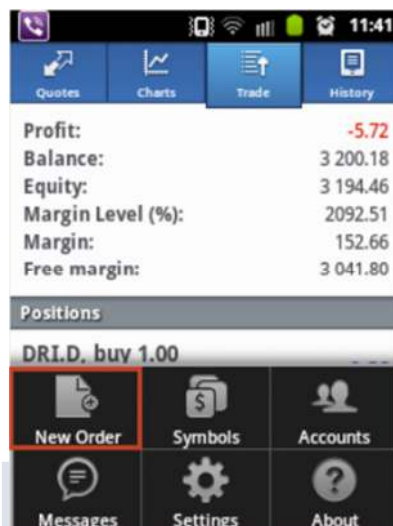
If you have any pending orders open, they will be shown in the “**Orders**” section of the page, which should appear below “**Positions**”. Here you will see the instrument, the type of pending order, the volume, the entry price, and then the current spot price of the position to see how close your order is to being executed.

To view all the parameters of the pending order, please **tap** on it. (as done with open positions). The information given is the same as the information given for open orders except instead of showing “swap, taxes and charges”, it shows “Price, Date and Time.”



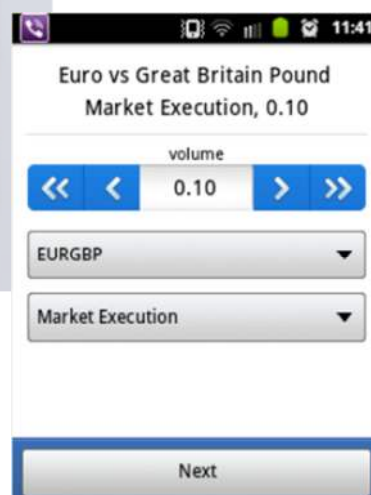
## A. HOW TO PLACE AN ORDER

You can open a trade at any time by simply tapping on the menu button of your phone and choosing the **New Order** section.



Alternative ways to place an order include: tapping on a financial instrument of the **Quotes** page or tapping on the chart of a certain instrument listed on the **Chart** page and then selecting the “**New Order**” option from the pop-up menu.

Once you have selected the **New Order** option, you will be directed to the page for placing a trade. Here you can choose the instrument, the volume and the type of order you wish to place (market order or pending order).



First select the instrument and the type of order you wish to place.

You have the option of placing the following order types:

1. **Market Execution:** A buy or sell order that is executed at the market price.
2. **Buy limit:** A pending order to open a buy position with an entry price below the current market price.
3. **Buy Stop:** A pending order to open a buy position with an entry price above the current market price.
4. **Sell Stop:** A pending order to open a sell position with an entry price below the current market price.
5. **Sell Limit:** A pending order to open a sell position with an entry price above the current market price.

PAGE 13



### ADDRESS



Techno Innovations LTD  
7 Strazhitsa str, Sofia- 1220, Bulgaria.

### WEB

support@technoinnovationsltd.com  
www.technoinnovationsltd.com

Afterwards you should select the Volume for your trade either by using the arrow buttons next to the Volume entry field in the relevant direction or by tapping on the **Volume** entry field - an on-screen keyboard will appear which allows you to manually enter the number.

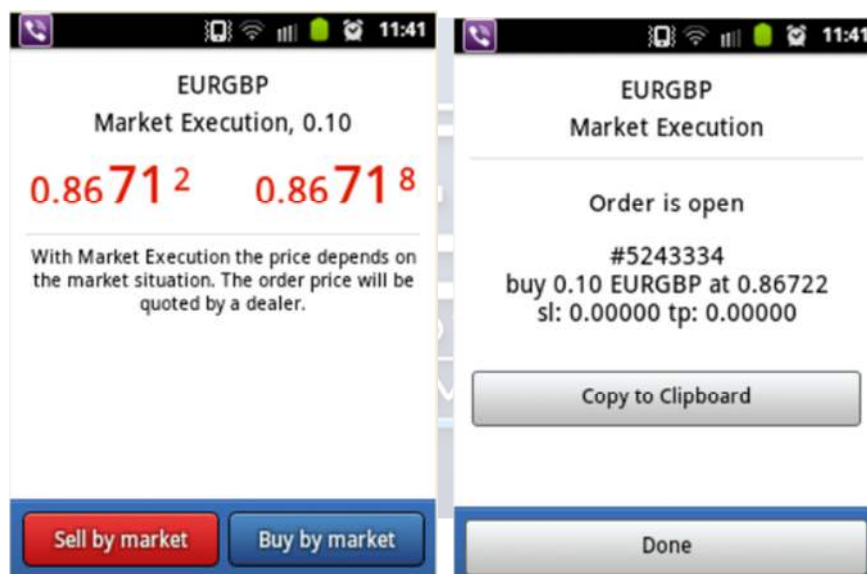
The  or  buttons will raise or lower the volume being traded by 0.5 lots (50,000 units of currency).

Meanwhile the  and  buttons will raise or lower the volume by one micro lot (5,000) units of currency.

Once you have set the parameters of your trade, select the **Next** button down of the **Trade** page.

#### NOTE

By some financial instruments (stocks, indices, commodities) the minimum order volume is 1. Please consider the instrument you are trading and enter an acceptable quantity for the relevant instrument.



If you choose to place a **Market Execution** order, it will be executed immediately at the current market price. After pressing the **Next button**, you will be presented with a page displaying the current **Bid** and **Ask** prices.

From here, either select the red **Sell button** or the blue **Buy button** for the specified financial instrument.

Once you have select one of these options, your order will be executed. You will instantly see the details of your order appear at the top of the page along with the price you have entered the market at.

If you have selected one of the five **Pending Order** types, the next page that will appear gives you the option to set the entry price, the stop loss and the take profit levels.

To enter an execution price, select the **Price** entry field. An on-screen keyboard appears so as to manually input the price at which you want to execute your order.

To enter a “Stop Loss” and “Take Profit”, select the relevant entry fields and the on-screen keyboard will appear again where you will then be able to input the values you desire.

The next button will give you the option to add Expiration for any pending order that you have placed.

The default setting is **GTC (Good till Cancelled)** for currency trading. For the other financial instruments, the pending orders expiration depends from the requirements of the exchanges.

#### NOTE

Please note that the function Expiration is disabled on the Live Server mobile application. You cannot place live orders with expiry date.



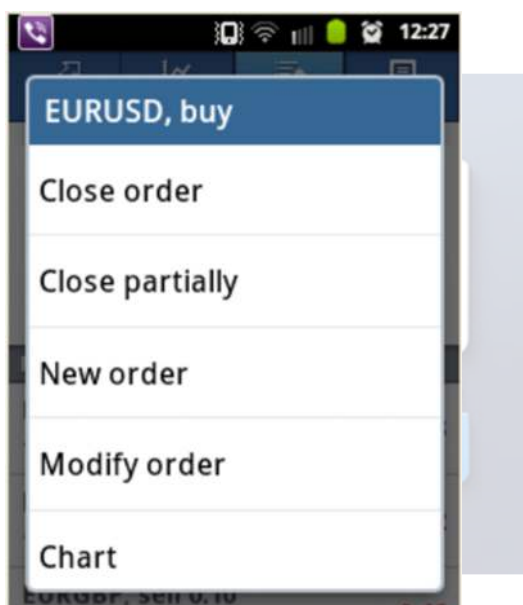
Once all trading parameters are set, select the **Place** button and your Pending Order will be placed.

#### NOTE

If the entry price, the **SL** or the **TP** you have entered is not correct, the button **Place** will remain inactive (in grey).

## B. HOW TO MODIFY/ CLOSE AN ORDER

To close/ modify an open position, to add a stop loss or take profit, you should select the order from the Trade page. Just **tap and hold your finger** for a few seconds until the optional menu pops up. At this point you will be able to modify or close open positions.



The pop-up menu contains the following options:

1. **Close order** - to close your order at the market price.
2. **Close partially** – to perform a partial close of the selected order.
3. **Close by**–to close your order by another order in the opposite market direction for the same instrument
4. **New order** - brings you back to the trade tab to place a new order.
5. **Modify order**– to add or modify your stop loss and take profit.
4. **Chart** – brings you back to the chart for the instrument you are trading.

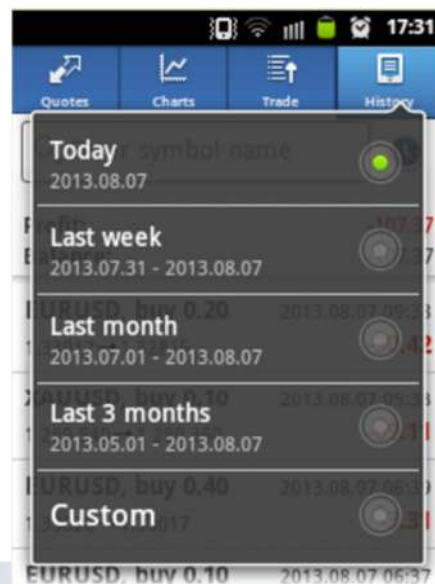


## 7. HISTORY PAGE

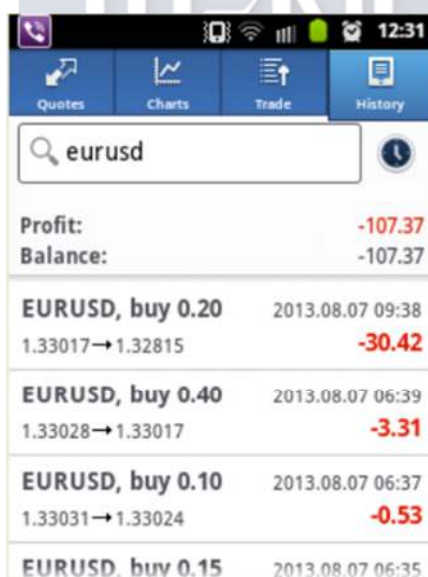
The **History** page enables you to view your trading history.

To choose the time period for your history report, select the tab. Choose from one of the following options: Today, Last week, Last month, Last 3 months, or Custom.

Custom enables you to select the time period of your choice. (see the picture on the right side)



To view your trades by instrument, enter the symbol (e.g. EURUSD) into the search box. This will display all your closed trades for the instrument selected.



## 8. MANAGING OPTIONS MENU

At any point of using the MT4 Android application, you can access the **managing options** by pressing the menu button of your phone.



For more information about the section **New Order**, you should have a look at chapter **6a**.

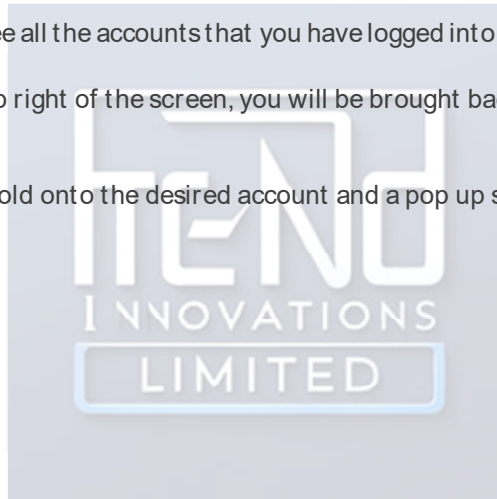
For more information regarding the section **Symbols**, you should have a look at chapter **5a**.

### A. ACCOUNTS

In the **Accounts** section you can see all the accounts that you have logged into from your device.

By selecting the tab at the top right of the screen, you will be brought back to the login page, where you can login to a new account.

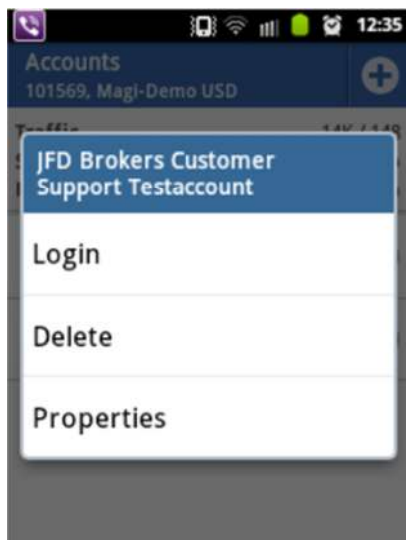
To delete an account, select and hold onto the desired account and a pop up screen will appear with the **Delete** option.



The info of the recently connected account is shown at the top of the window. Below this section you can see the parameters of the current connection:

- **Traffic**—amount of incoming and outgoing traffic for the current session
- **Server**—the name of the server, to which the mobile terminal is currently connected
- **Access point**—the name of the access point, through which the terminal is currently connected to a server.

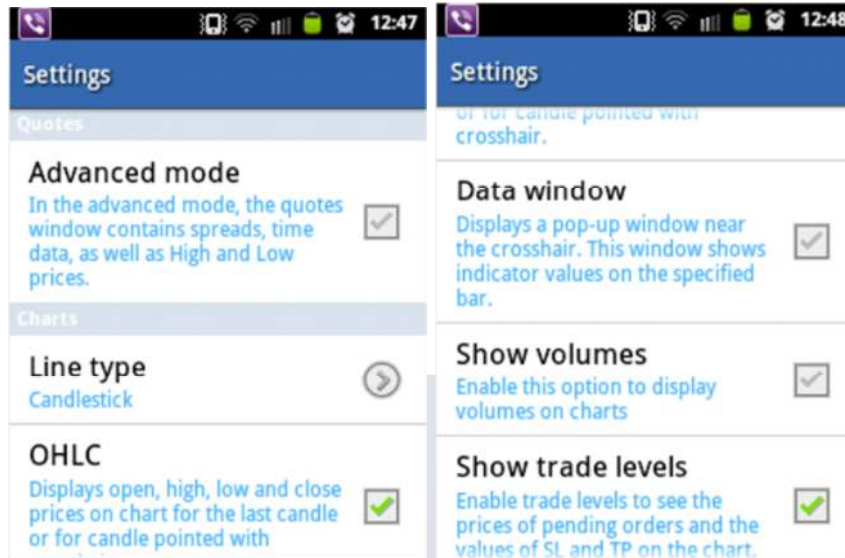
If you want to **Delete**, **Login** or simply see the **Properties** of your account, you just have to tap and hold your finger for a few seconds until the optional menu pops up.



If you want to **log out** of your account, you need to press the menu button on your phone again and afterwards to select the “Go offline” option which is shown on the bottom of the display.

## B. SETTINGS

The option **Settings** allows you to customize your quotes list, your chart settings. Please read more information the relevant chapters 4b. and 5a.



## C. MESSAGES

The **Messages** section of the managing options of the MT4 application is the place where you can get messages from the MQL5.community and Expert Advisors by using your ID.